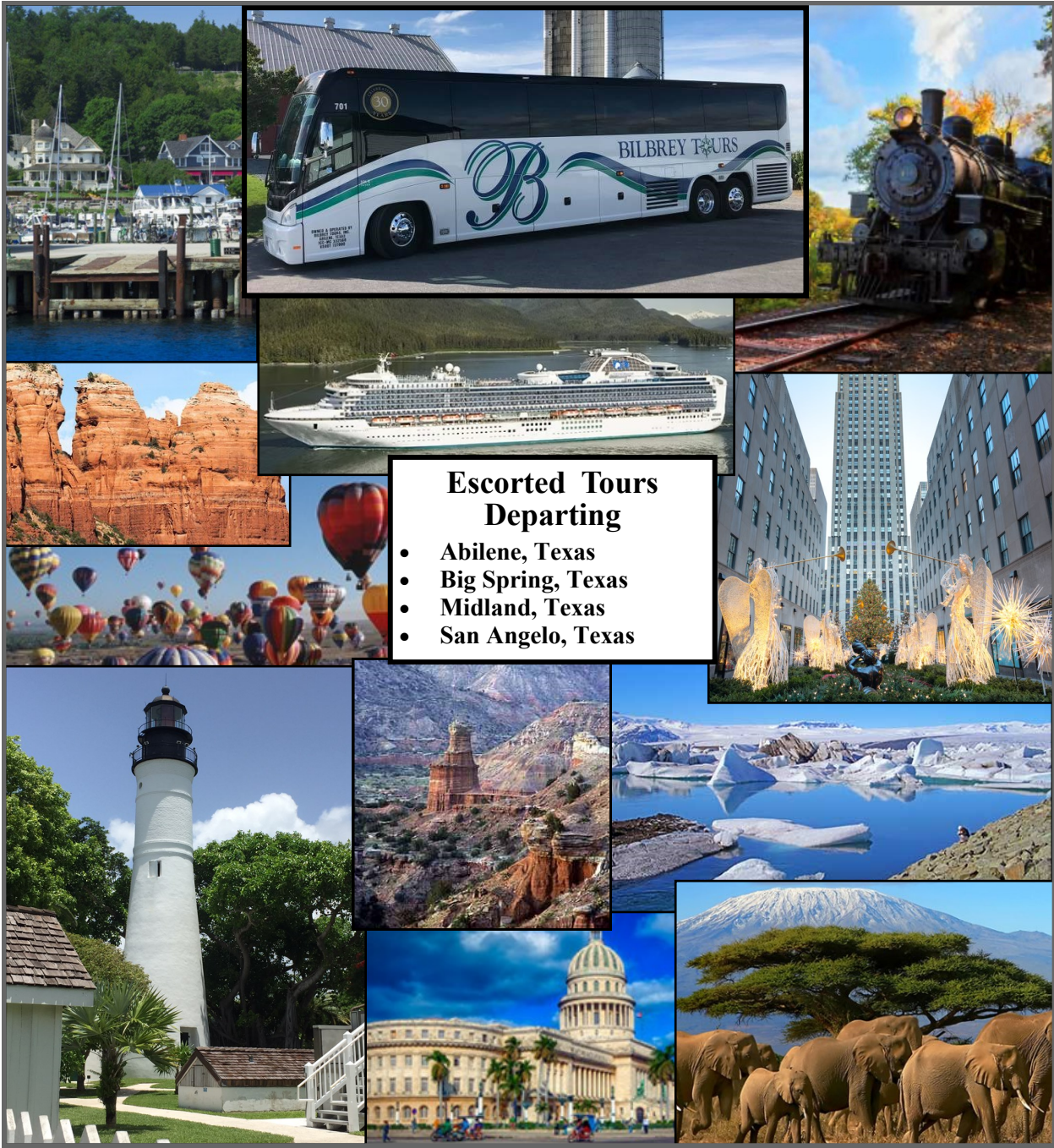


# 2025 Escorted Tours

# BILBREY TOURS



## Escorted Tours Departing

- Abilene, Texas
- Big Spring, Texas
- Midland, Texas
- San Angelo, Texas

3262 South 27th Street, Abilene, Texas 79605

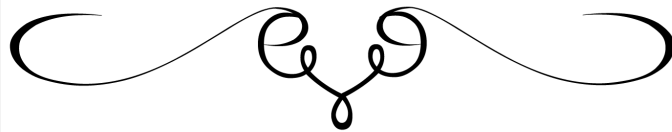
(325) 692-1308 or 1-888-692-1308

January 2025



# Index

Day Trips.....	3-4
2025 Tours.....	5-11
2026 Tour.....	11



## 2025

**February:**  
Winter Wonders in Yellowstone.....5

**March:**  
Race to Relaxation: Hot Springs, AR.....5

**April:**  
Tennessee/Mississippi Music Trail.....5  
Legacy of Bravery: National Medal of Honor.....3  
Best of Florida.....6

**May:**  
Spring Mystery Tour.....6  
*Always Patsy Cline*.....3

**June:**  
Alaska Cruise Tour.....6  
Palo Duro Canyon.....7

**July:**  
Michigan & the Great Lakes.....7  
Escape to the Sierra Blanca Mountains.....7

**August:**  
Ohio's Amish Country.....7  
*Singin' In the Rain*.....3  
Columbia & Snake River Cruise.....8

**September:**  
Texas Rangers Baseball Game.....3  
The Great Southwest.....8  
Fall Trains & Foliage of New England.....8

### Bilbrey Tours Tips

1. You may sign up on a tour after final payment date if space is available.
2. Book early on International Tours, Cruises and Fly-Ins to guarantee your seat due to airline availability.
3. An optional **Travel Insurance** plan is available for purchase on all tours through TripAssure. Bilbrey Tours encourages the purchase of a Travel Protection Plan to help protect your investment, your belongings and most importantly you! Travel Insurance is offered at a starting rate of 7% of your total tour cost. You can find information and full instructions at [www.bilbreytours.com](http://www.bilbreytours.com)
4. While Bilbrey Tours does not require proof of vaccination, some attractions or travel industry partners may require proof.

**October:**  
State Fair of Texas.....4  
Albuquerque Balloon Fiesta.....9  
Revved Up at Texas Motor Speedway.....4  
The Plains of Africa.....9  
Ozark Mountains Fall Foliage.....9

**November:**  
Branson Christmas.....10  
Cuba Discovery.....10  
*Holiday Inn*.....4

**December:**  
Grapevine Christmas.....4  
Christmas in the Big Apple.....10  
Smoky Mountain Christmas.....11  
Oklahoma Christmas Charm.....11

## 2026

**February:**  
Iceland's Magical Northern Lights.....11



### PASSPORT REQUIREMENTS

- Passports are required for all travel outside the United States.



January  
2025 Edition

**Bilbrey Tours, Inc.**

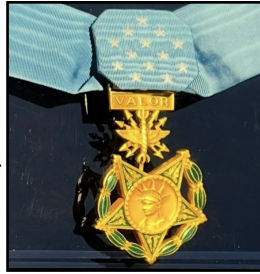


## Day Trips

### Legacy of Bravery: National Medal of Honor Museum Thursday, April 17, 2025

**Departing Abilene**  
**Highlights Include:**

- National Medal of Honor Museum (opening March 2025 - Arlington, TX)
- The National Medal of Honor Museum honors United States Armed Forces Medal of Honor recipients, and through recipient stories of courage and valor, the Museum will inspire current and future generations to discover and develop the shared values inherent in every Medal of Honor recipient — **COURAGE & SACRIFICE, COMMITMENT & INTEGRITY, CITIZENSHIP & PATRIOTISM.**
- Lunch Included



\$219 per person  
\$25 due upon booking - Final due March 4, 2025

### Always, Patsy Cline Plaza Theater - Cleburne, TX Saturday, May 31, 2025

**Departing Abilene**  
**Highlights Include:**

- Matinee at Plaza Theater in the heart of historic downtown Cleburne, TX
- *Always...Patsy Cline* is a timeless tale of friendship and great music. In 1961, country music legend Patsy Cline met Louise Seger, a fan from Houston, at a honky-tonk. The two struck up a friendship that continued via letter-writing until the singer's tragic death years later. *Always...Patsy Cline*, featuring some of Patsy Cline's biggest hits, such as "Walkin' After Midnight," "I Fall To Pieces," and "Crazy," welcomes home the fans who made it a hit and invites new generations to discover Patsy and Louise.
- Lunch included

\$179 per person  
\$25 due upon booking - Final due April 18, 2025

### Singin' In the Rain Granbury Opera House Saturday, August 16, 2025

**Departing Abilene**  
**Highlights Include:**

- Shopping and browsing Granbury, TX's historic town square
- *Singin' In the Rain* is based on the rocky transition period of the 1920's when silent pictures gave way to talkies. When Monumental Studios turns silent *The Dueling Cavalier* into *The Dancing Cavalier*, a musical picture, in order to stay relevant, they are faced with a problem; their star, Lina Lamont cannot sing, and cannot even really talk. Lina's voice sounds something like nails on a chalkboard. Enter Kathy Selden, an aspiring actress whose dulcet tones are able to cover Lina Lamont's voice -- calling into question what it means to act, how credit is distributed, and what it means to get a fair shake in the movie business. *Singin' in the Rain* includes some of the best-loved comedy routines, dance numbers, and love songs ever written.

\$135 per person  
\$25 due upon booking - Final due July 3, 2025

### Texas Rangers vs. Houston Astros Sunday, September 7, 2025

**Departing Abilene**  
**Highlights Include:**

- Texas Rangers vs. Houston Astros at Globe Life Field in Arlington



\$169 per person  
\$25 due upon booking - Final due July 25, 2025

**Gift Certificates  
are available  
Call Today!**

January  
2025 Edition

# Bilbrey Tours, Inc.



## State Fair of Texas Thursday, October 2, 2025

### Departing Abilene

#### Highlights Include:

- The State Fair of Texas is at historic Fair Park in Dallas, where it has been held since 1886.
- Big Tex, a 55 ft tall cowboy, has been the symbol of the fair since 1952.
- Only state fair in the US to include a full-blown auto show.
- The fair is known for its deep-fried foods, including Oreos and Twinkies.



**\$145 per person**

**\$25 due upon booking - Final due August 12, 2025**

## Revved Up at Texas Motor Speedway Friday, October 10, 2025

### Departing Abilene

#### Highlights Include:

- Texas Motor Speedway Tour: including Pit Row, Infield, The Speedway Club, SpeedyCash.com Victory Lane, and track
- Texas Motor Speedway (TMS) is a 1.500 mi quad-oval intermediate speedway in Fort Worth, Texas; hosting various major races since its inaugural season of racing in 1997, including NASCAR and IndyCar races.
- Tanger Outlet Mall for lunch on your own
- A pitstop at Buc'ees (a Texas legend); known for their clean restrooms, beef jerky, BBQ sandwiches, and Beaver nuggets; there is something for everyone at Buc-ee's.

**\$139 per person**

**\$25 due upon booking - Final due August 11, 2025**



## Holiday Inn

Plaza Theater - Cleburne, TX  
**Saturday, November 22, 2025**

### Departing Abilene

#### Highlights Include:

- Matinee at Plaza Theater in the heart of historic downtown Cleburne, TX
- **Holiday Inn** - Irving Berlin's delightful holiday musical. Jim leaves the bright lights of show business behind to settle down on his farmhouse in Connecticut... but life just isn't the same without a bit of song and dance. Jim's luck takes a spectacular turn when he meets Linda, a spirited schoolteacher with talent to spare. Together they turn the farmhouse into a fabulous inn with dazzling performances to celebrate each holiday, from Thanksgiving to the Fourth of July.
- Lunch included

**\$179 per person**

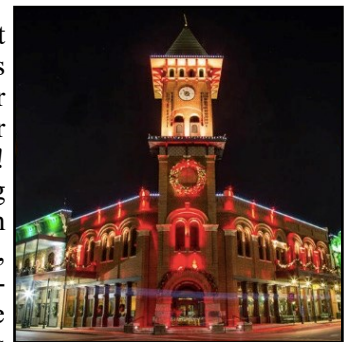
**\$25 due upon booking - Final due October 9, 2025**

## Grapevine Christmas Tuesday, December 2, 2025

### Departing Abilene

#### Highlights Include:

- Discover the magic in Grapevine, the Christmas Capital of Texas!
- Gaylord Texan Resort in Grapevine brings the magic of a winter wonderland indoor with its annual ICE! Exhibit. Featuring more than 2 million pounds of colorful, hand-carved sculptures created by more than 40 ice sculptors into symbols of Christmas and holiday characters. ICE! also boasts one-and-a-half million twinkling lights, 12,000 ornaments, a 52-foot-tall rotating Christmas tree, and a life-sized gingerbread house.
- Shopping at Grapevine Mills mall with more than 180 discount stores to include Burlington, Ann Taylor, Chico's Outlet, Marshalls, Disney Outlet, Neiman Marcus Last Call & Saks Fifth Ave Outlet



**\$169 per person**

**\$25 due upon booking - Final due October 15, 2025**

January  
2025 Edition

# Bilbrey Tours, Inc.



## 2025 Tours

### Winter Wonders in Yellowstone February 24\* - March 1, 2025

(Fly)  
(6 days – 5 nights)

**Tour is on  
Standby**

#### Departing Abilene Highlights Include:

- Roundtrip transportation to DFW
- \*Overnight in DFW area on February 24
- Roundtrip airfare from DFW to Jackson, WY
- 4 nights in Jackson, WY
- Yellowstone National Park by Snowcoach
- Grand Teton National Park by Snowcoach
- Horse-drawn sleigh ride in National Elk Refuge
- National Wildlife Art Museum
- Extended time for optional (extra cost) winter escapades of your choice (snowmobiling excursions half or full day, dog sledding, snowshoeing & cross country ski tours, and more.)
- Free time for shopping downtown (free shuttle) or relaxing at resort & spa
- Meals: 4 breakfasts, 1 continental breakfast, 3 lunches or dinners



\$3135 per person (2 people per room)  
\$3615 per person (1 person per room)  
Full payment due upon booking

### Race to Relaxation: Hot Springs, AR March 6 - 10, 2025 (5 days – 4 nights)

Departing Abilene, Big Spring, Midland and San Angelo  
Highlights Include:

- 3-nights at Historic Arlington Resort Hotel & Spa
- Hot Springs National Park
- Garvan Woodland Gardens
- Anthony Chapel
- Oaklawn Horse Races
- DeGray State Park
- Sunset Lake Cruise
- Free time on Bathhouse Row
- Meals: 3 breakfasts, 1 continental breakfast, 5 lunches or dinners



\$1415 per person (2 people per room)  
\$1695 per person (1 person per room)  
Full payment due upon booking

### Tennessee/Mississippi Music Trail

Celebrating the 100th Birthday of the  
Grand Ole Opry  
April 7 - 14, 2025  
(8 days – 7 nights)

Departing Abilene and San Angelo  
Highlights Include:

**Tour is on  
Standby**

- 2 nights in Downtown Nashville
- 2 nights at The Guest House at Graceland
- Grand Ole Opry - 100th Birthday celebration
- Backstage Tour at Grand Ole Opry
- Country Music Hall of Fame
- Graceland (Elvis Presley's Estate)
- Birthplace of Elvis - Tupelo, MS
- Loretta Lynn's Ranch
- Johnny Cash's Storytellers Hideaway Farm & Museum
- Sun Studios - Memphis, TN
- Memphis City Tour
- Free time in Downtown Nashville
- Meals: 5 breakfasts, 2 continental breakfasts, 6 lunches or dinners

\$2779 per person (2 people per room)  
\$3442 per person (1 person per room)  
\$25 due upon booking - Final due February 13, 2025



## Bilbrey Tours is on Facebook!

Search "Bilbrey Tours" to find our page. Click the "Like" button to receive up-to-date information from Bilbrey Tours right on your Facebook homepage. Be one of the first to hear about new tours and changes, see pictures and updates from our tours as they are happening, and keep up with everything and everyone at Bilbrey Tours!



January  
2025 Edition

**Bilbrey Tours, Inc.**



**Best of Florida  
Includes Key West  
April 22 - May 5, 2025  
(14 days - 13 nights)**

**Departing Abilene, Big Spring, Midland and San Angelo  
Highlights Include:**

- Florida's Coastline
- Atlantic Ocean and Gulf of Mexico
- 2 nights in Key West
- Historic Key West Tour
- Airboat Swamp Tour in the Everglades
- 2 nights in St Augustine
- St. Augustine City Tour
- Kennedy Space Center
- Edison and Ford Winter Estates
- Ringling Museum of the Circus
- Ringling Mansion - Ca'd'Zan
- Tarpon Springs (Greek community)
- 2 nights in Pensacola Beach
- National Museum of Naval Aviation
- Tallahassee Automobile Museum
- Meals: 4 breakfasts, 9 continental breakfasts, 13 lunches or dinners



**\$4450 per person (2 people per room)  
\$5910 per person (1 person per room)  
\$50 due upon booking - Final due February 14, 2025**



**Alaska Cruise Tour  
June 2 - 15, 2025 (Fly)  
7-Night Cruise plus 5-Night Land  
(14 days - 13 nights)**

**Departing Abilene  
Highlights Include:**

- Roundtrip transportation to DFW
- Roundtrip airfare from DFW
- 7-night cruise aboard *Sapphire Princess*
- Inside Passage (cruising at sea)
- Ketchikan (port of call)
- Juneau (port of call)
- Skagway (port of call)
- Glacier Bay (cruising at sea)
- Hubbard Glacier (cruising at sea)
- 5-night land package
- 1 night at Kenai Princess Wilderness Lodge
- 1 night Mt. McKinley Princess Wilderness Lodge
- Princess Express Scenic Rail Journey
- 2 nights at Denali Princess Wilderness Lodge
- Denali Natural History Tour
- 1 night in Fairbanks
- Sternwheeler Riverboat Cruise
- Meals aboard *Sapphire Princess*
- Overnight in DFW area on June 14

**Tour is on  
Standby**

**Inside Stateroom:  
\$5519 per person (2 people per room)  
\$7729 per person (1 person per room)**

**Outside Private Balcony:  
\$6869 per person (2 people per room)  
\$10429 per person (1 person per room)**

**\$750 deposit due upon booking  
Final due February 18, 2025**

**NOTE: Passport Required**



**Spring Mystery Tour  
May 12 - 18, 2025  
(7 days - 6 nights)**

**Departing Abilene, Big Spring, Midland and San Angelo  
Highlights Include:**

- Join us on our Spring Mystery Tour to an unknown destination!
- Meals: 6 continental breakfasts, 7 lunches or dinners

**\$2525 per person (2 people per room)  
\$3095 per person (1 person per room)  
\$25 due upon booking - Final due February 5, 2025**

January  
2025 Edition

**Bilbrey Tours, Inc.**



## Palo Duro Canyon

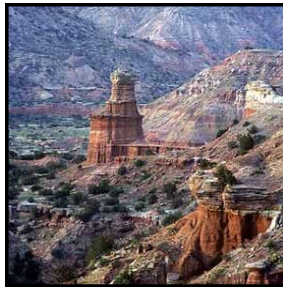
**June 5 - 6, 2025**

(2 days – 1 night)

*Departing Abilene*

**Highlights Include:**

- **TEXAS** Musical Drama set against the back drop of the Palo Duro Canyon & backstage tour
- BBQ Dinner with all the trimmings served outdoors
- Panhandle Plains Museum, the “Largest History Museum in Texas” explores 500 million years across a 26,000 square mile expanse of the Panhandle Plains
- Cowgirls and Cowboys in the West chuckwagon breakfast
- Meals: 1 breakfast, 1 lunch, 1 dinner



**\$569 per person (2 people per room)**  
**\$649 per person (1 person per room)**  
**\$25 due upon booking - Final due April 17, 2025**

## Escape to the Sierra Blanca Mountains

**Ruidoso and Alamogordo**

**July 16 - 19, 2025**

(4 days – 3 nights)

*Departing Abilene, Big Spring and Midland*

**Highlights Include:**

- 3 nights at Inn of the Mountain Gods - Ruidoso, NM
- Ruidoso Downs Horse Racing
- Lunch at Ruidoso Downs
- Museum of Space History
- Flying J Chuckwagon Supper and Show
- Eagle Ranch Pistachio Farm Tour
- Heart of the Desert Vineyards
- Shopping time in Ruidoso
- Tour of Spencer Theatre
- Inn of the Mountain Gods Casino (optional)
- Meals: 3 breakfasts, 3 lunches or dinners



**\$1095 per person (2 people per room)**  
**\$1480 per person (1 person per room)**  
**\$25 due upon booking - Final due April 9, 2025**

## Michigan and the Great Lakes Includes Mackinac Island

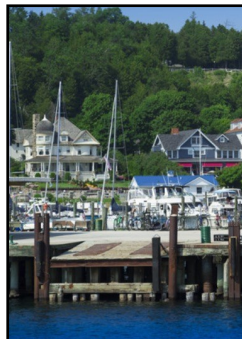
**July 12 - 22, 2025**

(11 days - 10 nights)

*Departing Abilene, Big Spring, Midland and San Angelo*

**Highlights Include:**

- Mackinac Island
- Carriage Tour
- Sault Ste. Marie
- Soo Locks Boat Tour
- Tahquamenon Falls
- Shipwreck Museum
- Whitefish Point Lighthouse
- Greenfield Village
- Henry Ford Museum
- Gateway Arch - St. Louis MO
- Lincoln's Tomb -Springfield, IL
- Great Lakes: Huron, Michigan and Superior
- Meals: 8 continental breakfasts, 2 breakfasts  
8 lunches or dinners



**\$3519 per person (2 people per room)**  
**\$4495 per person (1 person per room)**  
**\$50 due upon booking - Final due May 2, 2025**

## Ohio's Amish Country including ARK Encounter

**August 2 - 11, 2025**

(10 days – 9 nights)

*Departing Abilene, Big Spring, Midland and San Angelo*

**Highlights Include:**

- 3 nights in Sugar Creek, OH
- Amish and Mennonite Heritage Center
- Guided Amish Tour of Holmes County, OH
- Ohio Market (flea market)
- Hershberger Bakery & Farmer's Market
- Amish home meal
- Warther Carvings
- John Glenn's boyhood home - New Concord, OH
- Indianapolis Motor Speedway
- ARK Encounter—Williamstown, KY
- Old Friends Farm (retired race horses)
- Meals: 9 continental breakfasts,  
8 lunches or dinners

**\$2875 per person (2 people per room)**  
**\$3589 per person (1 person per room)**  
**\$50 due upon booking - Final due June 2, 2025**

January  
2025 Edition

**Bilbrey Tours, Inc.**

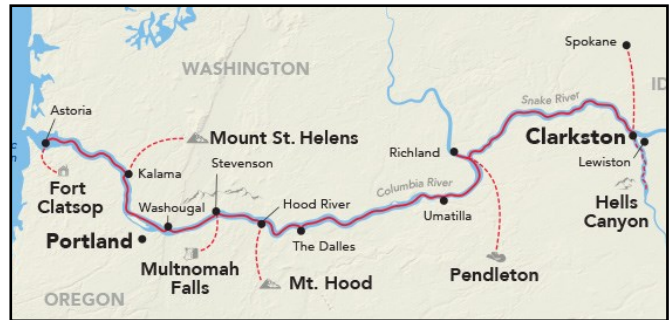


**Columbia & Snake River Cruise**  
**American Cruise Lines Riverboat**  
**August 26 - September 3, 2025 (Fly)**  
 (9 days - 8 nights)

**Departing Abilene**

**Highlights Include:**

- Roundtrip transportation to DFW
- Roundtrip air from DFW
- 1-night in Clarkston, WA
- 7-night riverboat cruise aboard *American Song*, in a Private Balcony Stateroom
- Clarkston, WA / Richland, WA
- Hood River, OR
- Astoria, OR
- Kalama, WA
- Portland, OR



- Scheduled shore activities and entertainment
- Meals and beverages aboard *American Song*

**\$7810 per person (2 people per room)**  
**\$8560 per person (1 person per room)**  
**\$500 due upon booking - Final due May 6, 2025**

**The Great Southwest**  
**Includes Grand Canyon by Rail**  
**September 10 - 19, 2025**  
 (10 days – 9 nights)

**Departing Abilene, Big Spring and San Angelo**

**Highlights Include:**

- 4 nights in the Sky Rock Inn in Sedona
- Grand Canyon Railway Excursion
- Grand Canyon South Rim Tour
- Grand Canyon National Park
- Sedona Historic Tour
- Chapel of Holy Cross
- Sedona Pink Jeep Tour
- Tucson City Tour
- Saguaro National Park
- Musical Instrument Museum
- OK Corral in Tombstone, AZ
- Desert Botanical Garden, Phoenix AZ
- Montezuma Castle National Monument
- Mini Time Machine (Miniature Museum)
- Optional Hot Air Balloon Excursion (additional cost)
- Meals: 3 breakfasts, 6 continental breakfasts, 8 lunches or dinners



**\$3735 per person (2 people per room)**  
**\$4800 per person (1 person per room)**  
**\$50 due upon booking - Final due June 10, 2025**

**Fall Trains & Foliage**  
**of New England**  
**September 28\* - October 7, 2025 (Fly)**  
 (10 days – 9 nights)

**Departing Abilene**

**Highlights Include:**

- Roundtrip transportation to DFW
- \*Overnight in DFW area on September 28
- Massachusetts, Maine, New Hampshire
- Vermont, Connecticut, Rhode Island
- Mount Washington Train Excursion
- Franconia Notch State Park
- Lunch at Griswold Inn - Essex, CT
- Trapp Family Lodge
- The Vermont Country Store
- Norman Rockwell Museum
- Boston City Tour
- JFK Presidential Library & Museum
- Quincy Market
- Kennebunkport, ME
- Nubble Lighthouse
- Ben & Jerry's Ice Cream Tour
- New England's vibrant fall colors
- Meals: 5 breakfasts, 4 continental breakfasts, 8 lunches or dinners



**\$4399 per person (2 people per room)**  
**\$5589 per person (1 person per room)**  
**\$100 due upon booking - Final due June 20, 2025**



January  
2025 Edition

**Bilbrey Tours, Inc.**



**Albuquerque Balloon Fiesta  
Includes Santa Fe and Durango  
October 6 - 12, 2025  
(7 days – 6 nights)**



**Departing Abilene, Big Spring and San Angelo  
Highlights Include:**

- Albuquerque International Balloon Fiesta
- Mass Ascension
- Balloon Glow
- Old Town Albuquerque
- Albuquerque City Tour
- Indian Pueblo Cultural Center
- Santa Fe Plaza
- Loretto Chapel
- Santa Fe City Tour
- San Francisco de Asis Mission
- Durango and Silverton Train

- Mesa Verde National Park
- 4-Corners Monument
- Meals: 1 breakfast, 5 continental breakfasts,  
5 lunches or dinners

**\$2425 per person (2 people per room)  
\$3205 per person (1 person per room)  
\$25 due upon booking - Final due August 5, 2025**

**The Plains of Africa  
October 16 - 29, 2025 (Fly)  
(14 days - 13 nights)**

**Departing Abilene  
Highlights Include:**

- Roundtrip transportation to DFW
- Roundtrip air from DFW
- Nairobi, Kenya
- Shaba National Reserve
- Samburu National Reserve
- A traditional Sundowner experience
- Lake Nakuru
- Masai Mara National Reserve
- Karen Blixen Home (author of *Out of Africa*)
- Amboseli National Park
- 13 Game Drives
- Treetop Lodge, The Ark
- Africa's "Big 5" (lion, leopard, rhinoceros,  
elephant, buffalo)
- Meals: 12 breakfasts, 11 lunches & 10 dinners

**Tour is on  
Standby**

**\$9605 per person (2 people per room)  
\$10805 per person (1 person per room)  
\$750 due upon booking - Final due March 6, 2025**

*Medicare does not pay outside the United States*  
Tour is operated by Collette Vacations

**NOTE: Passport Required**



**Ozark Mountains Fall Foliage  
October 20 - 24, 2025  
(5 days – 4 nights)**

**The Ozark Folk Center, located in the beautiful  
Ozark Mountains in Mountain View, AR is  
dedicated to preserving and presenting Ozark  
cultural heritage through crafts and music.**

**Departing Abilene, Big Spring, Midland and San Angelo  
Highlights Include:**

- 2 nights accom-  
modations at  
Ozark Folk  
Center
- Ozark Craft  
Village
- 2 Music Shows
- Historic Down-  
town Square in Mountain View
- Ozark Mountains
- JFK Memorial Overlook
- Lunch at Red Apple Inn-Heber Springs
- Philbrook Museum of Art - Tulsa, OK
- Meals: 2 breakfasts, 2 continental breakfasts,  
4 lunches or dinners



**\$1375 per person (2 people per room)  
\$1650 per person (1 person per room)  
\$25 due upon booking - Final due September 3, 2025**

January  
2025 Edition

# Bilbrey Tours, Inc.



## Branson Christmas November 2 - 7, 2025 (6 days – 5 nights)

Departing Abilene, Big Spring, Midland and San Angelo  
Highlights Include:

- Daniel - Sight and Sound Theatre
- Clay Cooper's Country Express
- Dean Z - The Ultimate Elvis
- The Texas Tenors
- Doug Gabriel Variety Show
- Dinner at College of Ozarks
- Fantastic Caverns
- Local shopping and sightseeing
- Meals: 5 cont. breakfasts and 4 lunches or dinners



**\$1639 per person (2 people per room)**  
**\$1979 per person (1 person per room)**  
**\$25 due upon booking-Final due September 17, 2025**

## Christmas in the Big Apple New York City December 7\* - 12, 2025 (Fly) (6 days - 5 nights)

Departing Abilene  
Highlights Include:

- Round trip transportation to DFW
- \*Overnight in DFW area on December 7
- Roundtrip airfare from DFW to NYC
- 4-nights at Time Square hotel
- Christmas Spectacular starring the world-famous *Radio City Rockettes*
- Broadway Theatre production
- Lunch at Carmine's Italian Restaurant
- Rockefeller Plaza/Top of the Rock
- Radio City Music Hall—Stage Door Tour
- Christmas Window display evening walking tour on the infamous 5th Avenue
- NYC City Tour to include Grand Central Terminal St. Patrick's Cathedral, the Christmas tree, and The Miracle on 34th Street -Macy's
- New York Botanical Gardens Holiday Train Show
- Free time for shopping, holiday markets, museums or additional theatre
- Meals: 1 continental breakfast, 4 breakfasts, 2 lunches

**\$3799 per person (2 people per room)**  
**\$4725 per person (1 person per room)**  
**\$250 due upon booking-Final due September 5, 2025**



## Cuba Discovery November 10 - 15, 2025 (Fly) (6 days – 5 nights)

Departing Abilene  
Highlights Include:

- Roundtrip transportation to DFW
- Museum of the Revolution
- Old Havana Walking Tour
- Artist Jose Fuster
- Cigar Factory Tour
- Colon Cemetery
- Havana Club Rum Museum
- Ernest Hemingway's Farm
- Habana Compas Dance Group Performance
- Old Style Classic Car Club
- Nacional Hotel Tour
- Pinar Del Rio & Vinales Valley
- Tobacco Farm & Farmhouse Visit
- Meals: 5 breakfasts, 4 lunches, 3 dinners



**\$5919 per person (2 people per room)**  
**\$6769 per person (1 person per room)**  
**\$750 due upon booking - Final due May 5, 2025**

Medicare does not pay outside the United States  
Tour is operated by Premier World Discovery

**NOTE: Passport Required**





January  
2025 Edition

**Bilbrey Tours, Inc.**



### Smoky Mountain Christmas

**December 9 - 16, 2025**

(8 days – 7 nights)

*Departing Abilene, Big Spring, Midland and San Angelo*

**Highlights Include:**

- 2-nights Pigeon Forge, TN
- Country Tonite Christmas Show
- Dolly Parton’s Stampede Dinner Show
- Biltmore Mansion Tour
- Lunch & Dinner at Biltmore Estate
- Incredible Christmas Place
- Asheville City Tour
- Brunch at Omni Grove Park Inn
- Bush’s Beans Visitor Center
- Meals: 7 continental breakfasts  
8 lunches or dinners



**\$2505 per person (2 people per room)**  
**\$3085 per person (1 person per room)**  
**\$50 due upon booking - Final due October 3, 2025**

### Oklahoma Christmas Charm Including an Evening with Mark

**Lowry and Friends Concert  
December 17 - 20, 2025**

(4 days – 3 nights)

*Departing Abilene*

**Highlights Include:**

- 2 nights in OKC
- 1 night in Miami, OK
- Mark Lowry & Friends Concert
- OKC National Memorial & Museum
- Crystal Bridge Conservator at Myriad Gardens
- American Banjo Museum and performance
- North Pole City
- Coleman Theatre (Miami, OK)
- Bricktown Holiday Boat Excursion
- Meals: 2 breakfasts, 1 continental breakfast,  
3 lunches or dinners



**\$1225 per person (2 people per room)**  
**\$1470 per person (1 person per room)**  
**\$25 due upon booking - Final due October 17, 2025**

## 2026 Tour



### Iceland’s Magical Northern Lights

**February 27 - March 5, 2026 (Fly)**

(7 days - 6 nights)

*Departing Abilene*

**Highlights Include:**

- Roundtrip transportation to DFW
- Roundtrip air from DFW
- Reykjavik
- Northern Lights Cruise
- Search for the Northern Lights
- Golden Circle
- Thingvellir National Park
- Gullfoss
- Lava Exhibition Center
- Vik
- Seljalandsfoss
- Skógar Museum
- Skógafoss
- Sólheimajökull Glacier
- Jökulsárlón Glacial Lagoon
- Blue Lagoon
- Meals: 6 breakfasts, 5 dinners

**\$5579 per person (2 people per room)**  
**\$6129 per person (1 person per room)**  
**\$750 due upon booking - Final due July 21, 2025**

*Medicare does not pay outside the United States*  
Tour is operated by Collette Vacations

**NOTE: Passport Required**



January  
2025 Edition

# Bilbrey Tours, Inc.



## TERMS AND CONDITIONS

Bilbrey Tours, Inc. has been in business since 1990 and is a member of the National Tour Association, Cruise Lines International Association, American Bus Association, Abilene Chamber of Commerce and is a BBB Accredited Business.

Bilbrey Tours owns luxury motorcoaches with pull-down window shades, video monitors, foot rests, cup holders, reclining seats, individual map pockets, large overhead storage and restroom facility.

Photographs of travelers may be used in publications, social media, Bilbrey Tours webpage and at travel shows. Anyone declining permission must notify Bilbrey Tours Inc in writing.

### Smoking/Liquor

Smoking, e-cigarettes and alcoholic beverages are not permitted on the motorcoach. Frequent (about every two and a half hours) rest/meal stops afford smoking opportunities.

### Physical Disability

In compliance with the Americans With Disabilities Act, Bilbrey Tours, Inc. will make reasonable efforts to accommodate the special needs of tour participants. It is strongly recommended that persons requiring assistance be accompanied by a companion who is capable of and totally responsible for providing the assistance. Neither Bilbrey Tours, Inc. personnel nor its suppliers may physically lift or assist clients onto transportation vehicles or within hotel rooms. Travelers needing special assistance must notify Bilbrey Tours, Inc. at the time of booking to determine what assistance may reasonably be made available by Bilbrey Tours, Inc.

### Tour Price Includes

Transportation from Abilene (other cities noted), hotel accommodations, hotel baggage handling for one piece of luggage, admissions to included attractions, meals as specified, services of a tour escort and gratuity for driver, unless otherwise noted.

**Tour Prices are subject to fuel supplement surcharges by airlines, cruise lines and other vendors.**

### Unused Features

No refund or credit will be given, in whole or in part, for unused air transportation, land transportation, hotel accommodations, or other features you voluntarily do not use.

### Single / Triple Accommodations

Please understand that a "single" reservation means single accommodations at the hotels, and does not guarantee a double seat on the motorcoach. Be advised that "triple" accommodations at the hotels will be two beds only. It does not cover the cost of a rollaway.

### Seating

In an effort to be fair to all travelers, Bilbrey Tours, Inc. will use a seat-rotation system. Your tour escort will remind you when to rotate seats. If you anticipate any difficulty with this system, you must contact Bilbrey Tours, Inc. prior to tour.

### Changes In Accommodations

If a single room must be assigned because your roommate cancels (even if at the last moment or while on the tour), we must out of necessity charge you the supplement or pro rata thereof since the hotels make no allowance. Likewise, if one of three roommates cancels, resulting in double, rather than triple occupancy, your final billing must be based on double occupancy.

### Travel Documents

Your travel documents will be sent approximately two to three weeks prior to departure. Documents include tour itinerary, departure and arrival information, hotel information, clothing suggestions, baggage tags, plus any helpful hints.

### Agency Responsibility

Bilbrey Tours, Inc., Abilene, Texas acts solely as your agent arranging for transportation, lodging, and sightseeing activities, and will not be liable for any delayed departures or arrivals or for any damages, losses or injuries to person or property. Full payment by the tour member constitutes the tour member's acceptance of these terms and conditions.

No liability is assumed in connection with any transportation, restaurants or lodging used for the duration of these tours. Although every effort is made to handle your luggage carefully, we are not responsible for lost, stolen, or damaged articles, including luggage or personal property. We reserve the right to cancel any tour prior to departure, and in such case, our total obligation will be only to refund all payment toward said tour. Bilbrey Tours Inc. will not be liable for matters beyond our control including but not limited to traffic congestion, airline delays, airline cancellations, weather conditions, Government shutdowns or acts of God. Bilbrey Tours, Inc reserves the right to refuse service to any person.

### Refund Policy

#### *For cancellations after time of booking to date of final payment:*

Full refund less penalties assessed by airlines, cruise lines and other vendors.

#### *For cancellations from date of final payment to 15 days prior to travel:*

50% refund less penalties assessed by airlines, cruise lines and other vendors.

#### *For cancellations 14 days to day of travel:*

No refund.

### Travel Insurance

An optional Travel Insurance plan is available for purchase on overnight tours through TripAssure. Bilbrey Tours encourages the purchase of a Travel Protection Plan to help protect your investment, your belongings and most importantly you! Bilbrey Tours makes the Tour & Cruise Travel Protection Plans easily available. For complete details and to purchase a plan, follow this link:

<https://atc.tripassure.com/main/?welcome=BILB3262TX>

### Cancellation Policy

**All cancellations must be reported to Bilbrey Tours, Inc. and TripAssure when the problem causing the need to cancel arises.**

### Make checks payable to:

**Bilbrey Tours, Inc.  
3262 South 27th Street  
Abilene, Texas 79605**